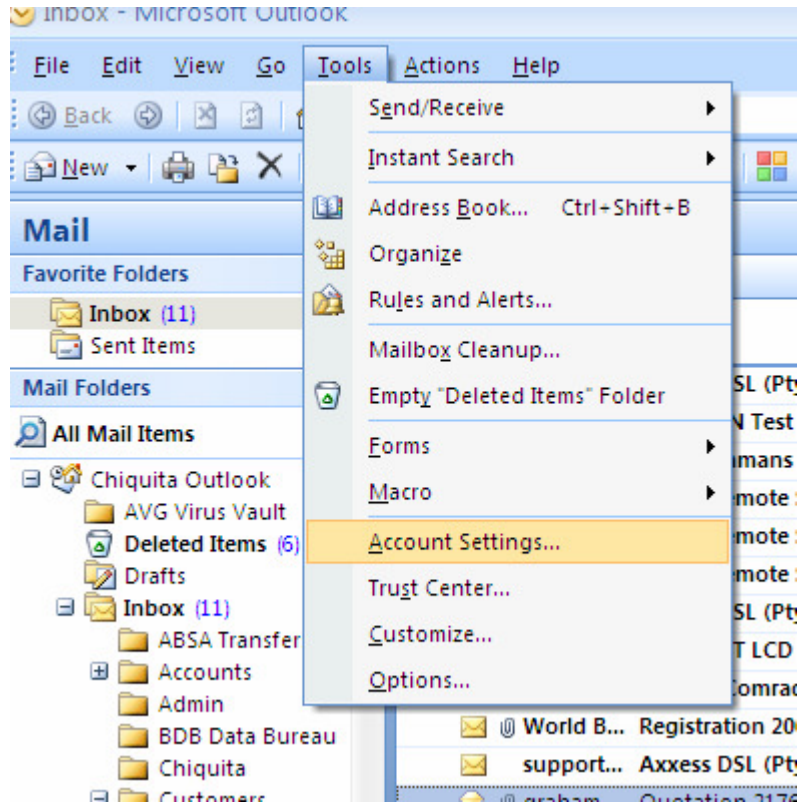


## SMTP authentication in outlook 2007:

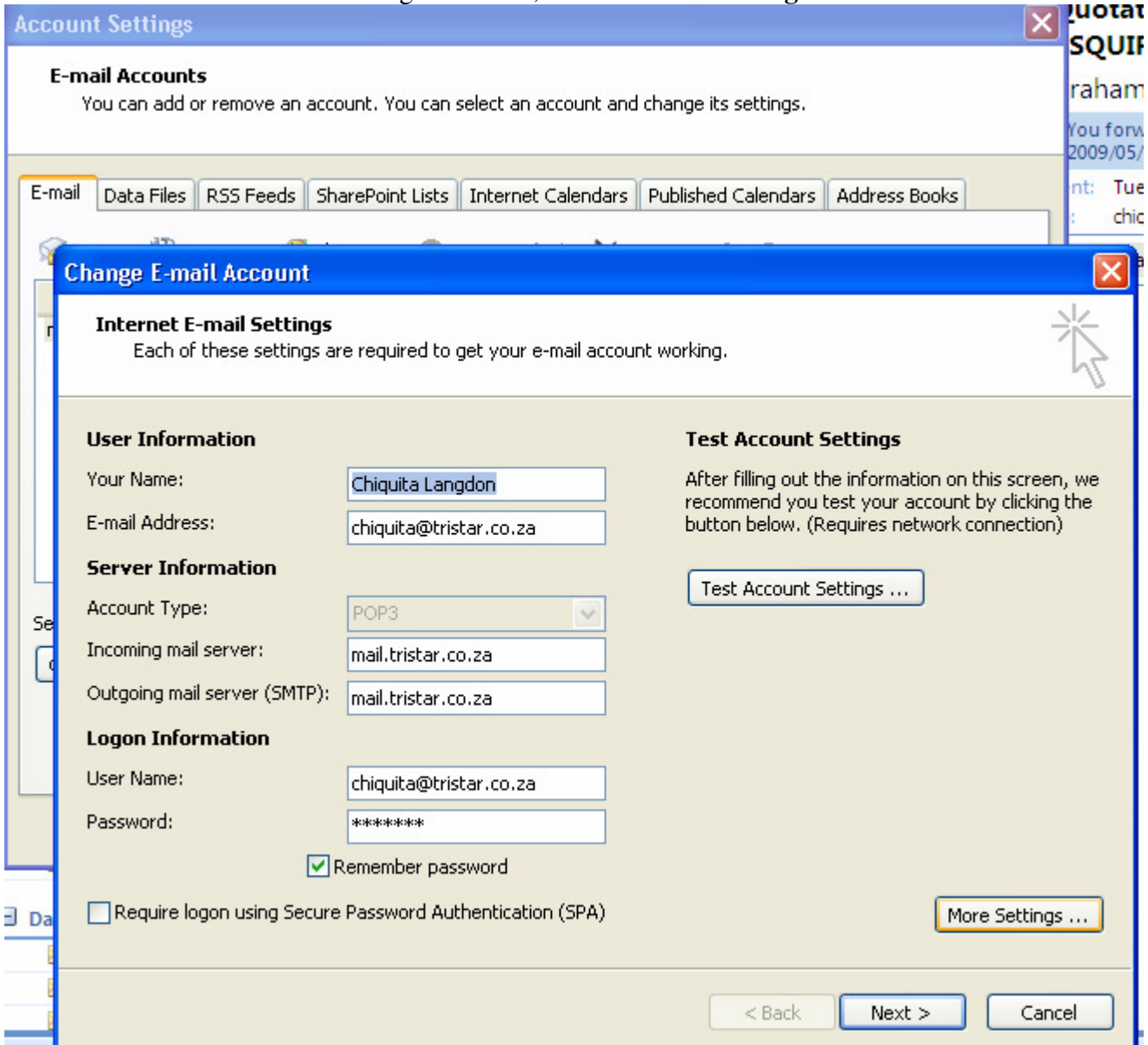
Open Outlook 2007



## Click Tools – Account Settings



In the Account Settings window, select your account, and double click on it, in the “E-mail account settings” window, click on **More Settings**

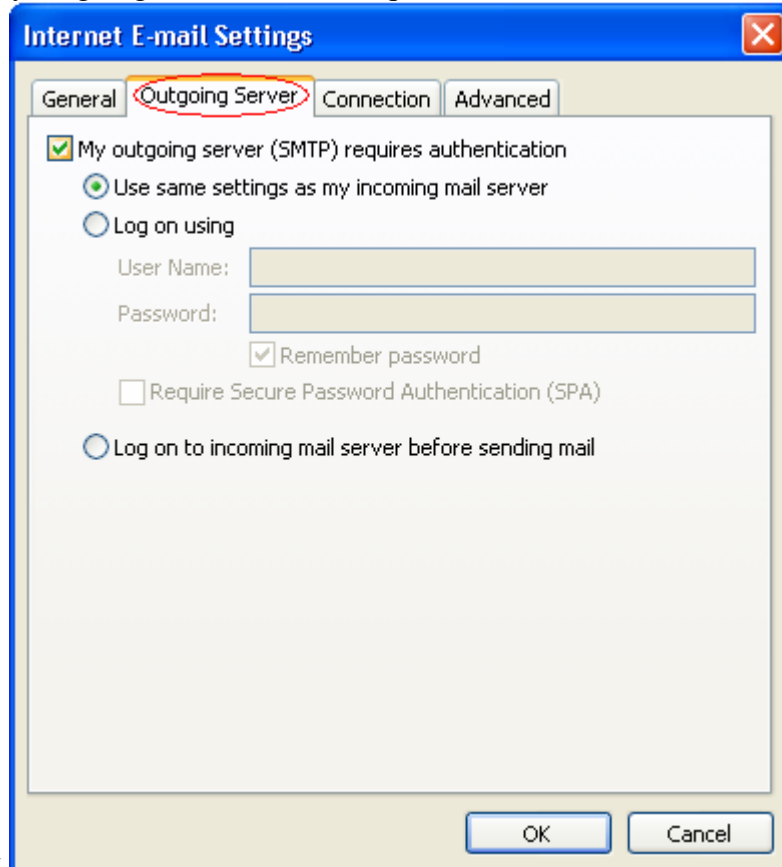


The screenshot shows the 'Account Settings' window with the 'E-mail Accounts' tab selected. A 'Change E-mail Account' dialog box is open, displaying the 'Internet E-mail Settings' for a specific account. The dialog box contains the following sections and fields:

- User Information:**
  - Your Name: Chiquita Langdon
  - E-mail Address: chiquita@tristar.co.za
- Server Information:**
  - Account Type: POP3
  - Incoming mail server: mail.tristar.co.za
  - Outgoing mail server (SMTP): mail.tristar.co.za
- Logon Information:**
  - User Name: chiquita@tristar.co.za
  - Password: \*\*\*\*\*
  - Remember password
  - Require logon using Secure Password Authentication (SPA)
- Test Account Settings:**
  - After filling out the information on this screen, we recommend you test your account by clicking the button below. (Requires network connection)
  - Test Account Settings ...
- More Settings:**
  - More Settings ...

At the bottom of the dialog box, there are three buttons: '< Back', 'Next >', and 'Cancel'.

In the Internet E-mail settings window, click on the **outgoing server** tab, then check the box that says: “My outgoing server (SMTP) requires authentication.” and click



ok.