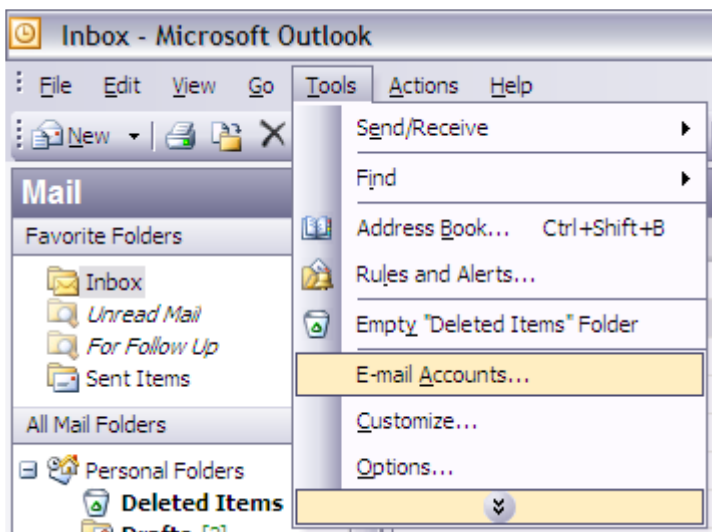
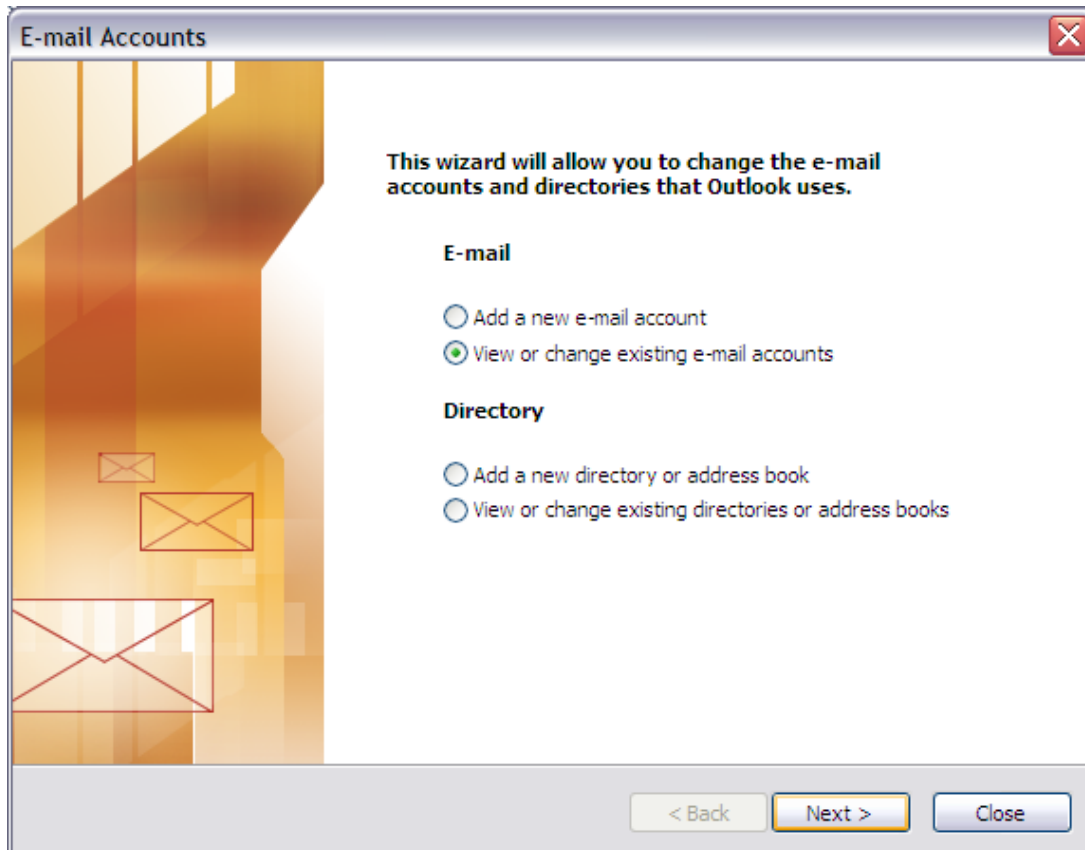


Setting Authentication on SMTP Server in Outlook

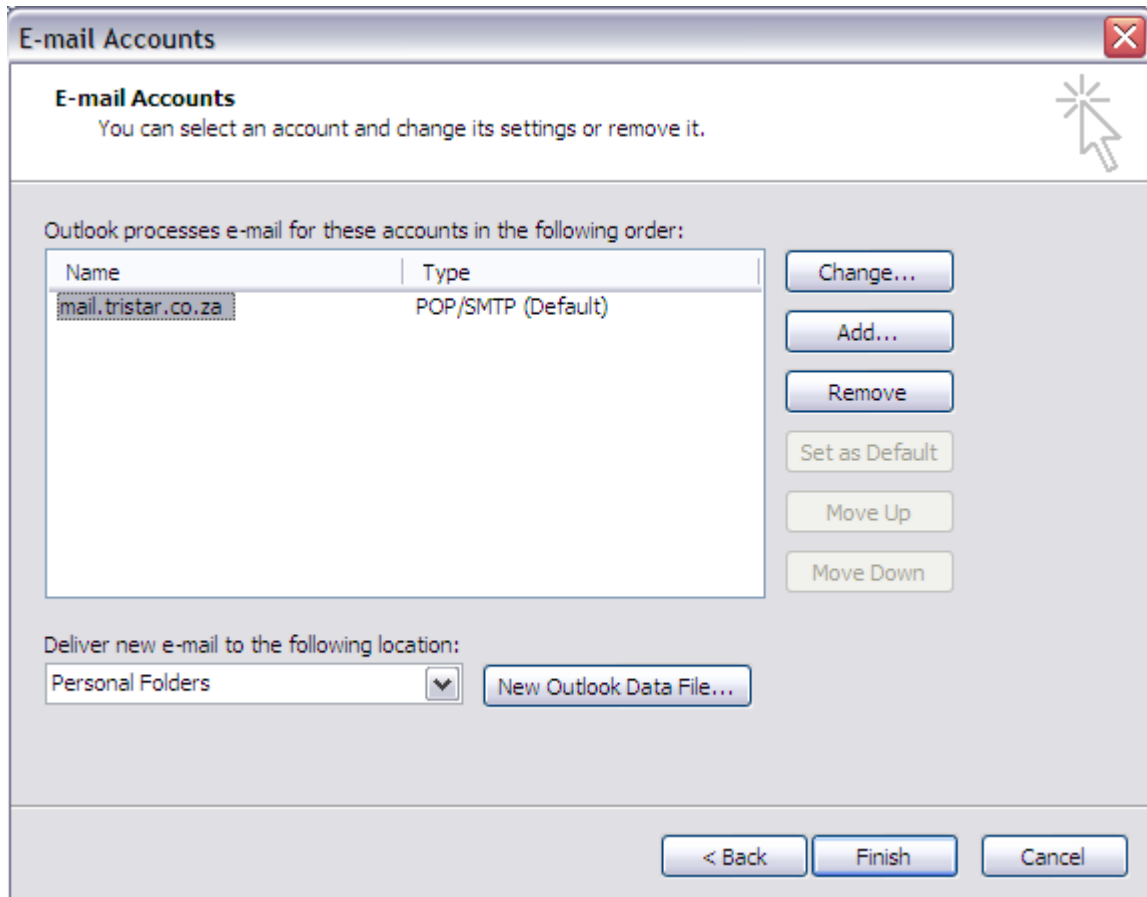
This configuration will guide you through the setup of SMTP authentication.

1. Open Outlook.
2. Click on Tools.
3. Click on Email Accounts.

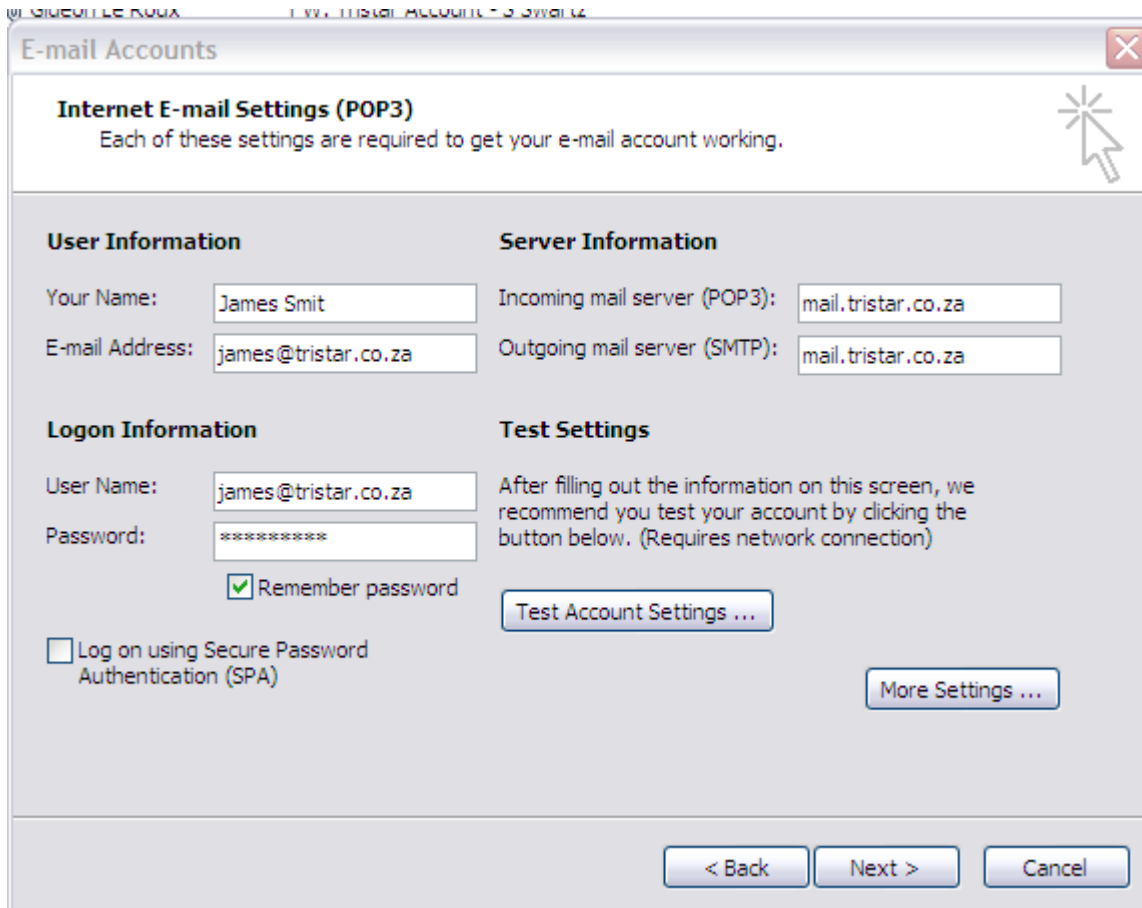




4. Click on View or Change Existing Account.
5. Click Next.



6. Select desired account.
7. Click Change.



E-mail Accounts

Internet E-mail Settings (POP3)
Each of these settings are required to get your e-mail account working.

User Information

Your Name:

E-mail Address:

Server Information

Incoming mail server (POP3):

Outgoing mail server (SMTP):

Logon Information

User Name:

Password:

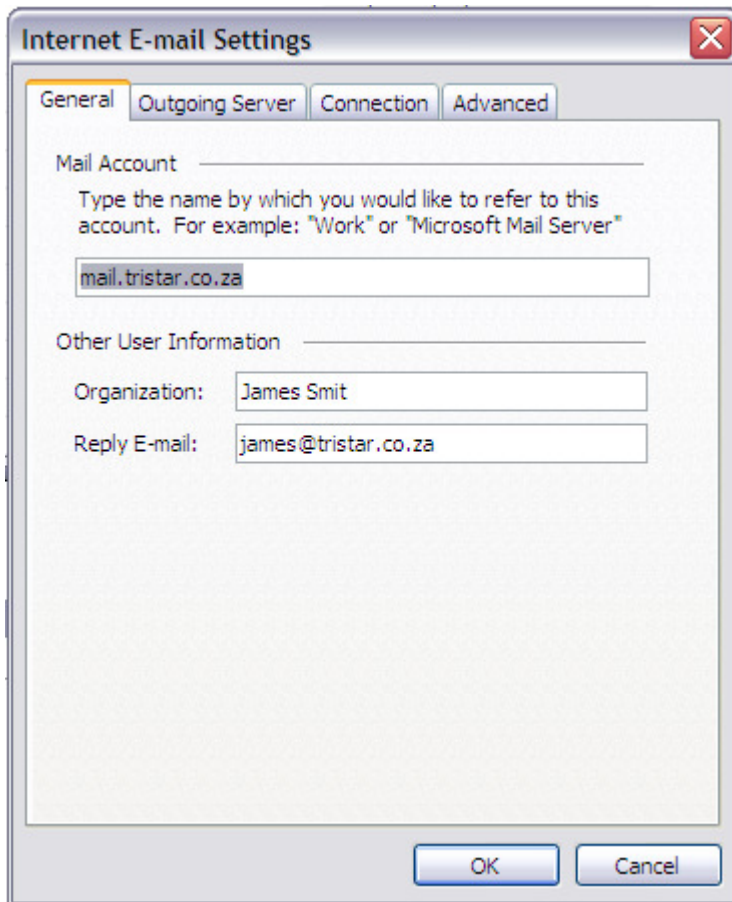
Remember password

Log on using Secure Password Authentication (SPA)

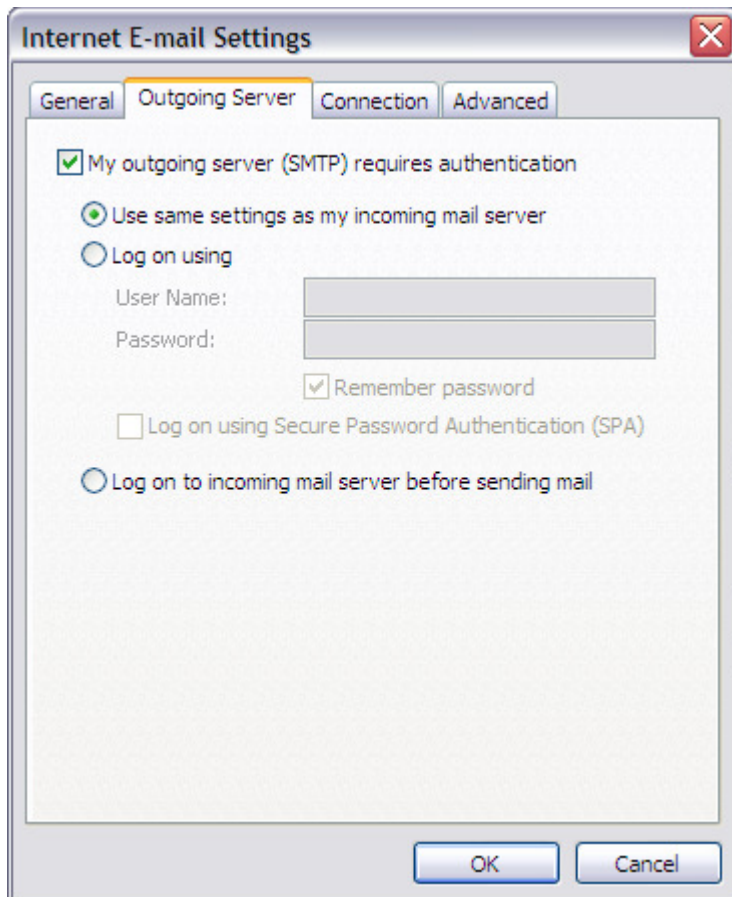
Test Settings

After filling out the information on this screen, we recommend you test your account by clicking the button below. (Requires network connection)

8. Check that Outgoing SMTP server is set to e.g. mail.joesoap.co.za
9. Click on the More Settings button.



10. Click on the Outgoing Server tab.



11. Select the tickbox My outgoing server (SMTP) requires authentication.
12. Select "Use same settings as my incoming mail server".
13. Click OK.
14. Click Next.
15. Click Finish.