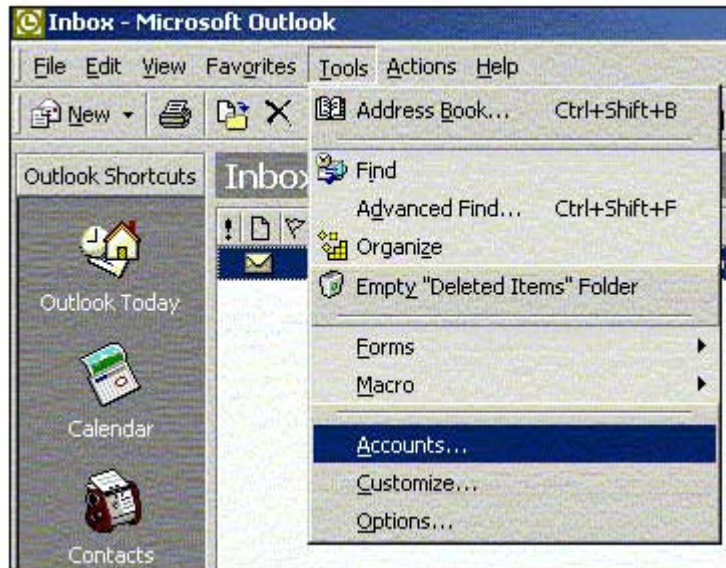
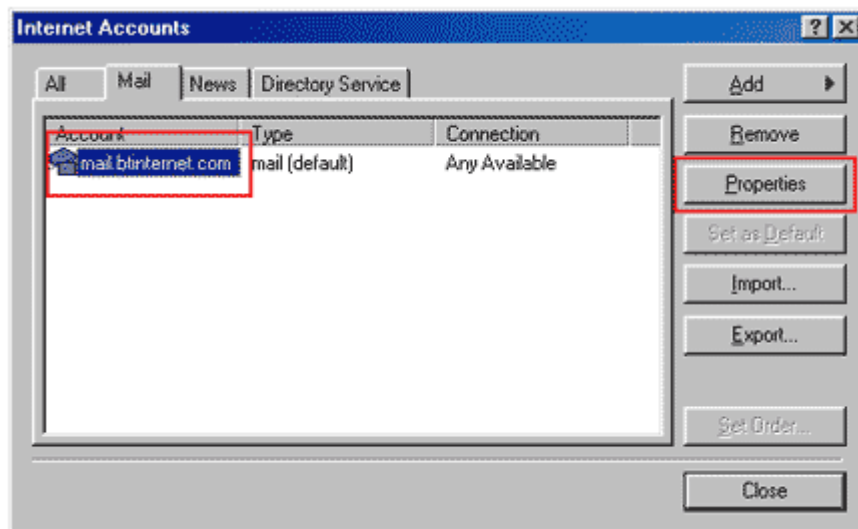


In MSOutlook 2000, go to the **Tools** menu and select **Accounts**



Select the **account** which you would like the SMTP relay service for and click the **Properties** tab.



This will take you to the next screen where you should click **Servers** tab to set them up for your SMTP relay service.

click the option '**My server requires authentication**' and click on the **Settings** tab at the bottom of the window to take you to the server authentication fields.



rci.rutgers.edu Properties

General **Servers** Connection Advanced IMAP

Server Information

My incoming mail server is a **IMAP** server.

Incoming mail (IMAP): mail.tristar.co.za

Outgoing mail (SMTP): mail.tristar.co.za

Incoming Mail Server

Account name: jsmith

Password:

Remember password

Log on using Secure Password Authentication

Outgoing Mail Server

My server requires authentication **Settings...**

OK Cancel Apply

Once you have clicked on the Settings tab, you will see the screen to set up the Outgoing server authentication.



**Outgoing Mail Server**

Logon Information

Use same settings as my incoming mail server

Log on using

Account name: yourname@yourdomain.com

Password: \* xxxxxxxxxxxx

Remember password

Log on using Secure Password Authentication

OK Cancel

Click OK  
Click Apply  
Click OK again